

**ITU ASIA – PACIFIC REGIONAL
WORKSHOP ON IDI 2018
14TH TO 16TH MARCH 2018
PHILIPPINE**

G.C.S. Fernando

W.K.N. Pradeep

W.A.S. Wijesingha

H.M.S.A.Wijerathne

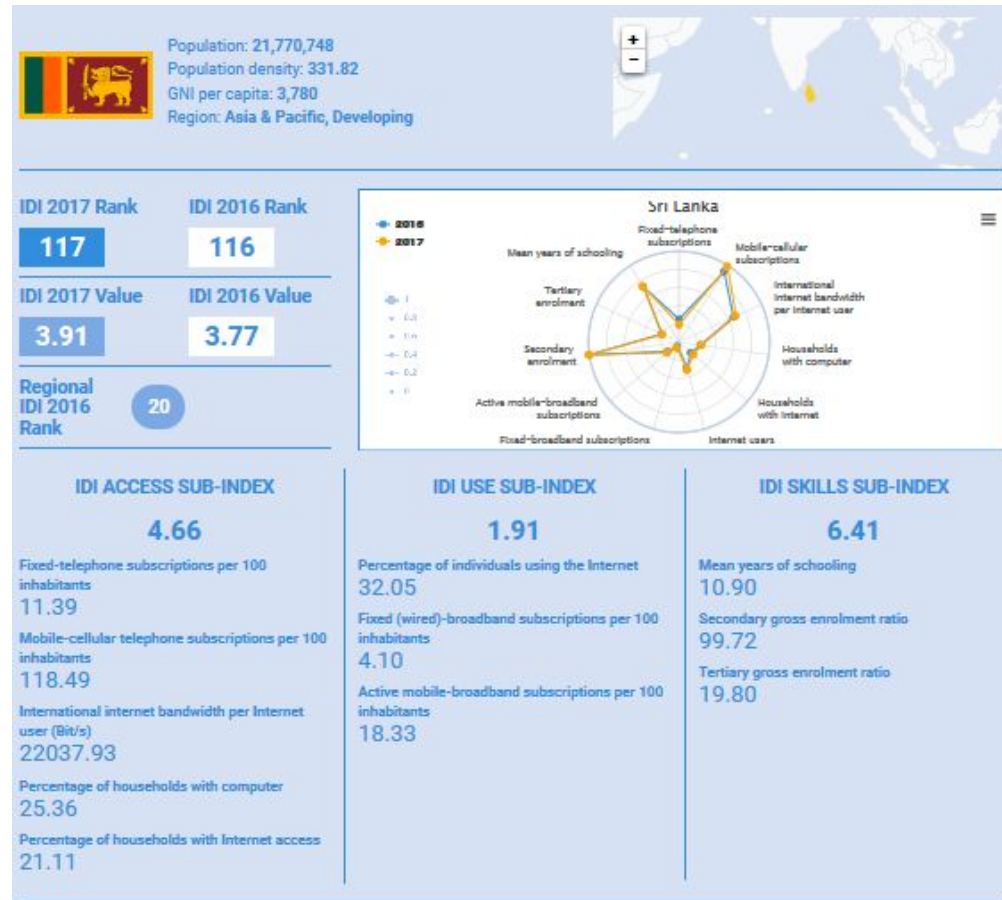
**Policy ,International Relation ,
Licenses & Network Division**

**Telecommunications
Regulatory Commission of Sri
Lanka**

CONTENTS

- **COUNTRY PROFILE & TELECOM SECTOR IN SRI LANKA**
- **CURRENT DATA COLLECTION FRAMEWORK IN TRCSL**
- **INDICATORS USED IN SRI LANKA**
- **COORDINATION FRAMEWORK AMONG AGENCIES**
- **ISSUES AND CHALLENGES**

COUNTRY PROFILE OF SRI LANKA



STATISTICAL OVERVIEW

Telecommunication Sector as at end of Dec 2017

Number of Fixed Access Telephone Subscriptions 2,603,178

Fixed Access Telephone Subscriptions per 100 inhabitants 12.1

Number of Cellular Mobile Telephone Subscriptions(90 days) 28,199,083

Cellular Mobile Subscription per 100 inhabitants 131.5

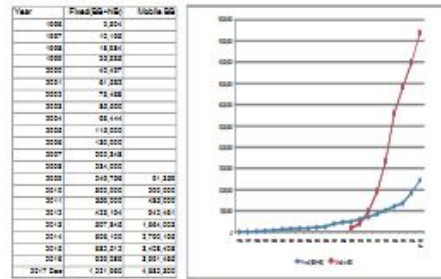
Fixed Narrowband subscriptions 1,456

Fixed Broadband Subscriptions 12,20,504

Mobile Broadband Subscriptions 4,682,300

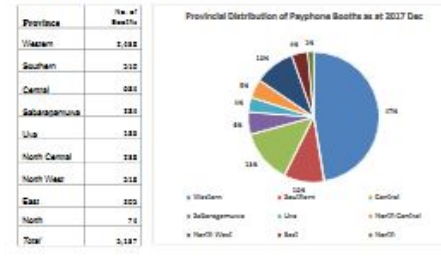
Number of Public Pay Phone Booths 5,137

5. Fixed Broadband, Narrowband and Mobile Broadband Subscriptions (1996 – 2017 Dec)



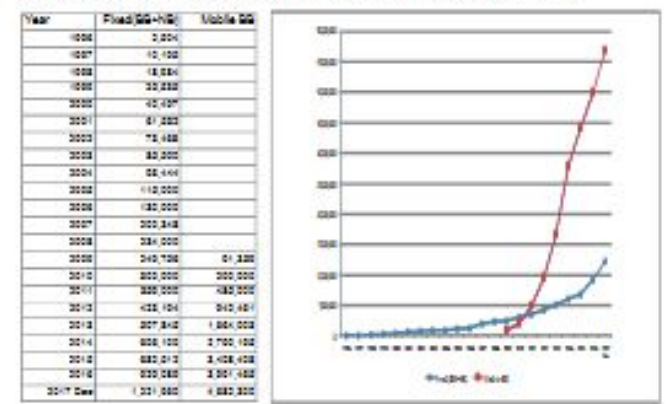
Y-axis: Subscriptions, X-axis: Years

6. Provincial Distribution of Payphone Booths (Dec 2017)

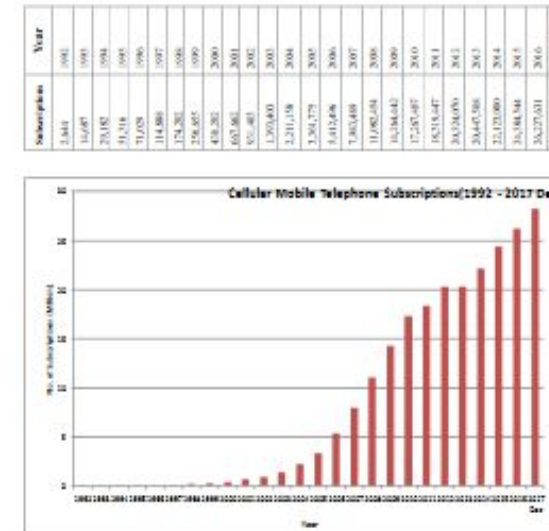


Provincial Distribution of Payphone Booths as at 2017 Dec

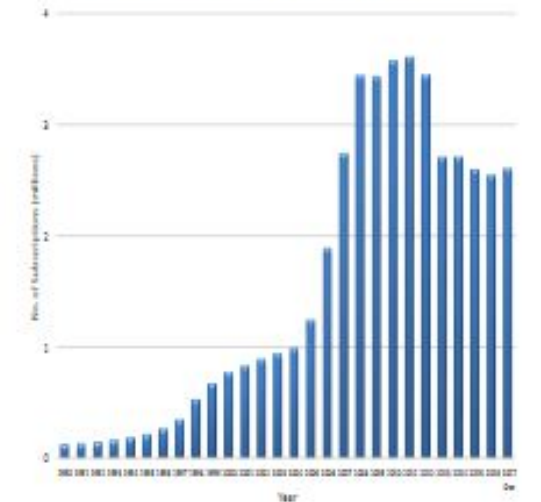
5. Fixed Broadband, Narrowband and Mobile Broadband Subscriptions (1996 – 2017 Dec)



4. Cellular Mobile Telephone Subscriptions (1992 – 2017 Dec)



Fixed Access Telephone Subscriptions 1990 - 2017 Dec



TELECOMMUNICATIONS SECTOR IN SRI LANKA

Number of Licenses Granted under Section 17 of the Sri Lanka Telecommunications Act.

Fixed Access Telephone Services	3
Cellular Mobile Services	5
Data Communications & ISP	8
Trunk Mobile Radio	1
International Telecommunications Operators	7
Cable TV	2
Direct to Home Satellite Broadcasting	5
Satellite Services	1



CURRENT DATA COLLECTION FRAMEWORK IN TRCSL

TRCSL collect, process, make available ,publish and validate a wide range of ICT data sets for various National and International requirements.

Division	Data Format	Data Source	Data Collection Method	Data Collection Time Line
Statistic Unit	Fixed and Mobile Cellular Telephone Subscriptions Fixed and Mobile Broadband Subscription Number of Public Payphones Call Duration Number of Direct Employment in Telecommunications Sector Licences Details	Fixed and Mobile Operators License Division of TRCSL.	Excel format questionnaire	Monthly
Compliance	QoS Monthly performance report QoE	Fixed and Mobile Operators ISP	Excel format questionnaire Internet Drive Test Questionnaire	Quertly On time & On Line
Competition	Revenue Investments Tax	Operators	Excel format questionnaire	Monthly /Annually
Policy,Internationa Relation & Licenses	ITU World Telecommunications /ICT Indicators	Operators/Intra Division	Long and Short Questionnaire	Annually
Networks	GIS and ASMS	Operators	Online application	Tower basis (As request)

General	QoS	Competition
<ul style="list-style-type: none"> • Fixed Access Telephone Subscription • Cellular Mobile Subscription • International and Local Internet bandwidth • Fixed and Mobile Broadband subscription 	<ul style="list-style-type: none"> • Operator Assistance Answer • Directory Assistance Answer • Timely Service to Applicants • Call Completion ratio • Out of Service trouble report cleared within standard 	<ul style="list-style-type: none"> • Average Revenue Per User (ARPU)

INDICATORS USED IN SRI LANKA

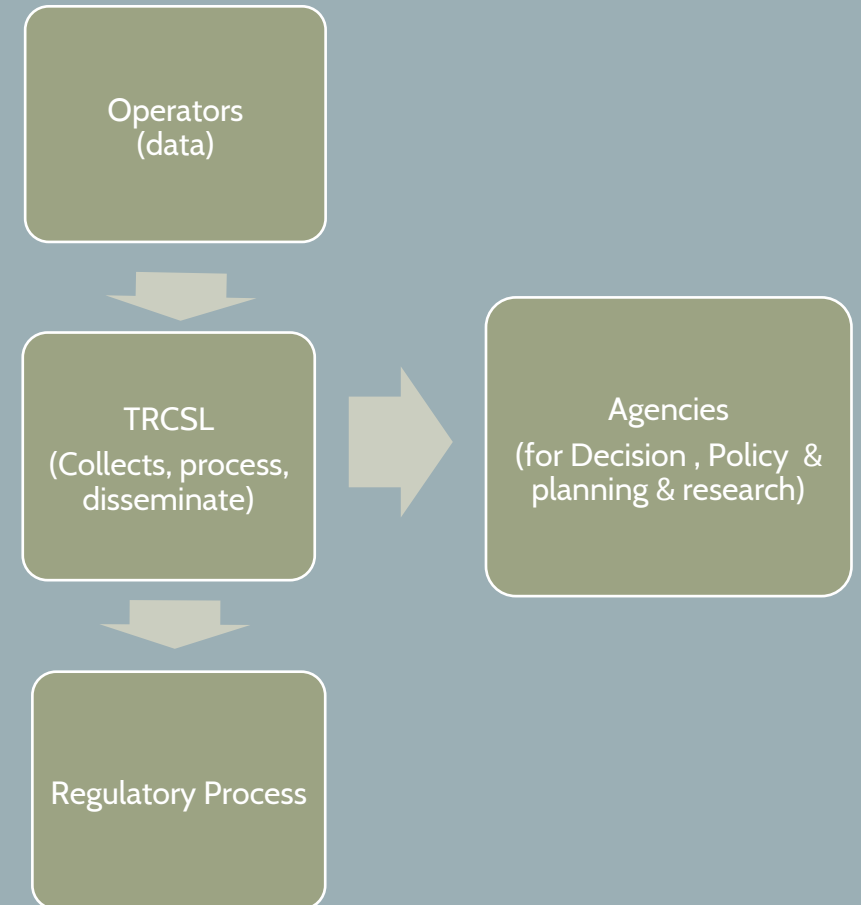
For Internet and Speed Test Indicators

<http://www.trc.gov.lk/#home2>

COORDINATION FRAMEWORK AMONG AGENCIES

TRCSL disseminating data sets for decision making ,policy information , planning & research purpose for different stakeholders.

Agency	Coordinating Unit	Data Sets	Time
ITU	International Relation and Policy	Define Questionnaire	Annually
APT/CTO	International Relation, and Policy	Define Questionnaire	Annually
Census and Statistical Department	Statistics Unit	Define Questionnaire	Quarterly
Central Bank of Sri Lanka	Statistics Unit/Competition Division	Define Questionnaire/Indicators	Annually
Ministry of Finance	Statistical Unit/Competition Division	Questionnaire	Annually/On request
Institute of Policy Planning	International Relation and Policy	Questionnaire	Annually/On request
Other Government Ministry, Departments/Authority	Statistical Unit/network	Questionnaire/Define format	On request
University and NGO	International Relation and Policy	Questionnaire	On request



ISSUES & CHALLENGES

- Difficulties in updates & timely collection
- No central system for data collection, manipulation and dissemination
- Data validation through technical compliance
- Different format of data
- Gap between data and real scenario
- Difficulty to extract data from various systems for requirements

THANK YOU

<http://www.trc.gov.lk>

guruge@trc.gov.lk